



**TRANSPORTATION CABINET**

Frankfort, Kentucky 40622  
www.transportation.ky.gov/

**Steven L. Beshear**  
Governor

**Michael W. Hancock, P.E.**  
Secretary

May 28, 2014

CALL NO. 100  
CONTRACT ID NO. 141226  
ADDENDUM # 2

Subject: Warren County, HPP STP 0150 (012)  
Letting May 30, 2014

- (1) Revised - Plans - Layout Sheets
- (2) Added - Special Environmental Note - Page 19(a) of 171

Proposal revisions are available at <http://transportation.ky.gov/Construction-Procurement/>.

Plan revisions are available at <http://www.lynnimaging.com/kytransportation/>.

If you have any questions, please contact us at 502-564-3500.

Sincerely,

A handwritten signature in blue ink that reads "Diana Castle Radcliffe".

Diana Castle Radcliffe  
Director  
Division of Construction Procurement

DR:ks  
Enclosures



An Equal Opportunity Employer M/F/D

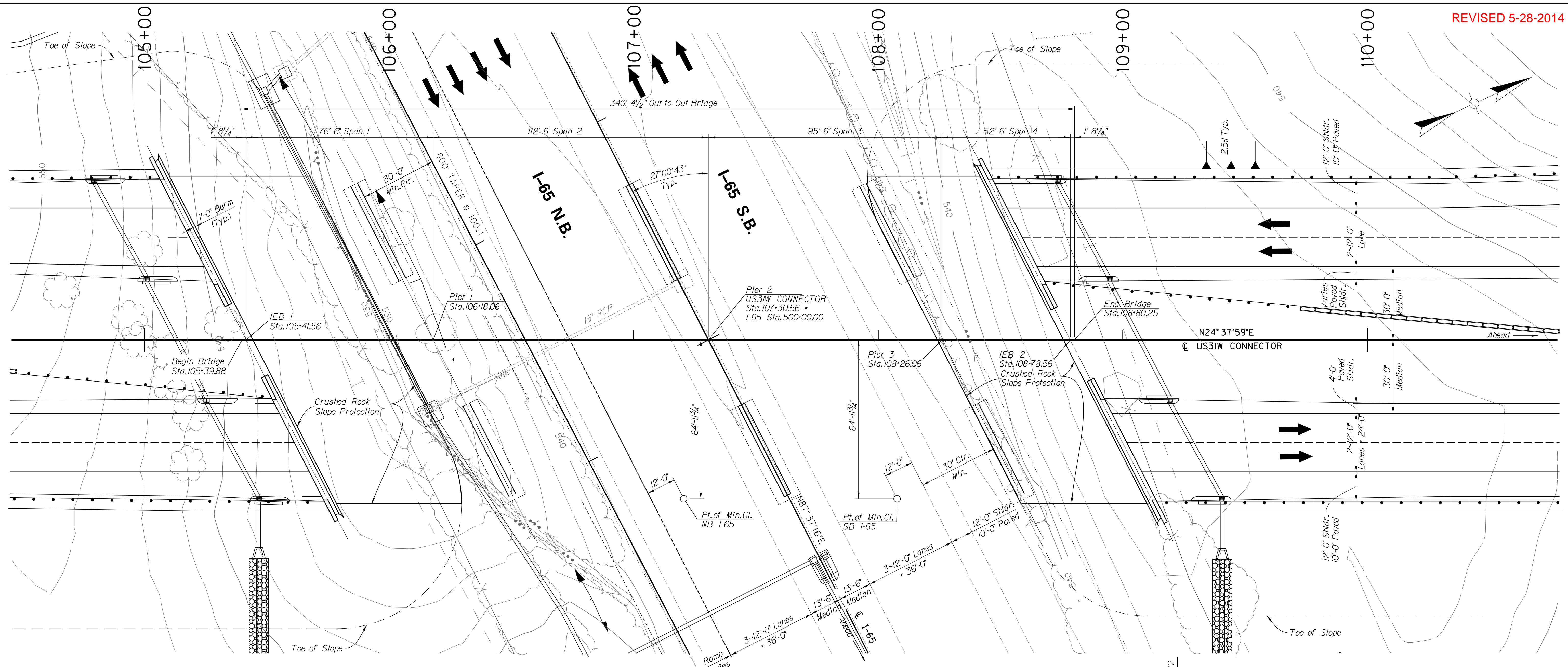


FILE NAME: V:\03102 I-65 TO 31-W CONNECTOR BRIDGES\1. US 31 CONNECTOR OVER I-65 V4. STAGE II FINAL DRAWINGS\3 - S3 LAYOUT.DGN

USER: Jlopez  
DATE PLOTTED: May 23, 2014

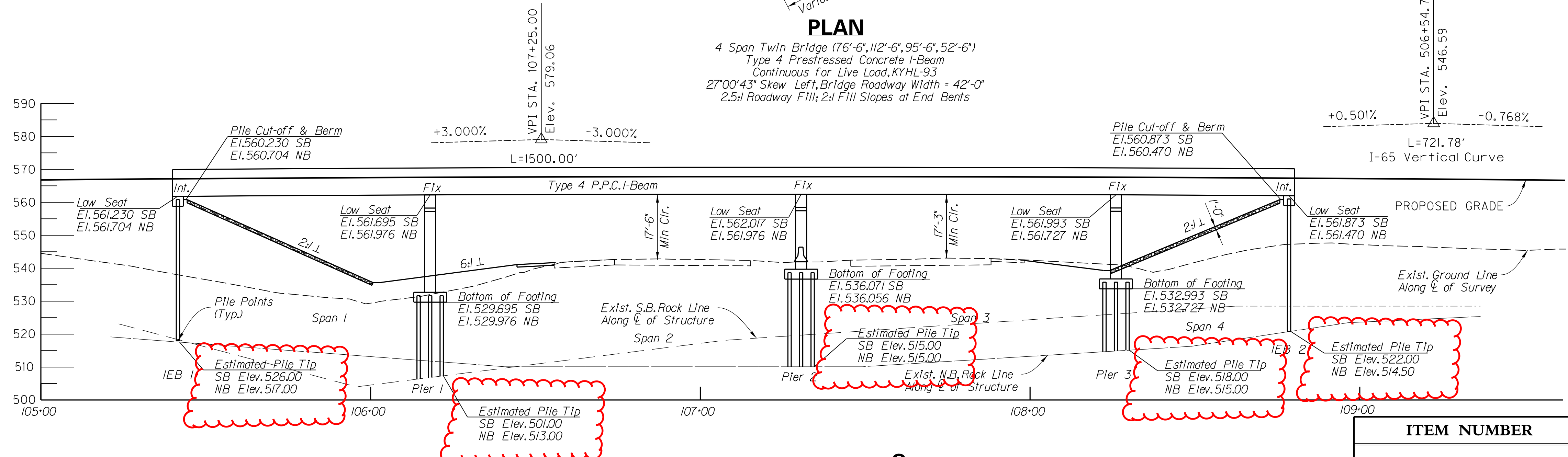
E-SHEET NAME:

MicroStation v8.11.7.180



**PLAN**

4 Span Twin Bridge (76'-6", 112'-6", 95'-6", 52'-6")  
 Type 4 Prestressed Concrete I-Beam  
 Continuous for Live Load, KYHL-93  
 27°00'43" Skew Left, Bridge Roadway Width = 42'-0"  
 2.5:1 Roadway Fill; 2:1 Fill Slopes at End Bents



**SECTION ALONG C SURVEY**

ITEM NUMBER	3-16.00
-------------	---------

REVISION		DATE
DATE: NOV. 2011	CHECKED BY: R. WADE	
DESIGNED BY: S. WEBER	R. WADE	
DETAILED BY: F. KOCH	R. WADE	
<b>Commonwealth of Kentucky</b> <b>DEPARTMENT OF HIGHWAYS</b>		
COUNTY <b>WARREN</b>		
ROUTE <b>US31W CONNECTOR</b>	CROSSING <b>I-65</b>	
<b>LAYOUT SHEET</b>		
PREPARED BY <b>Qk4</b> 1046 E. Chestnut Street Louisville, Kentucky 40202		SHEET NO. <b>S3</b> DRAWING NO. <b>26721</b>



FILE NAME: V:\03102 I-65 TO 3I-W CONNECTOR BRIDGES\1. US 3I CONNECTOR OVER I-65 V4. STAGE II FINAL DRAWINGS\3 - S3 LAYOUT.DGN

USER: jlopez  
DATE PLOTTED: May 23, 2014

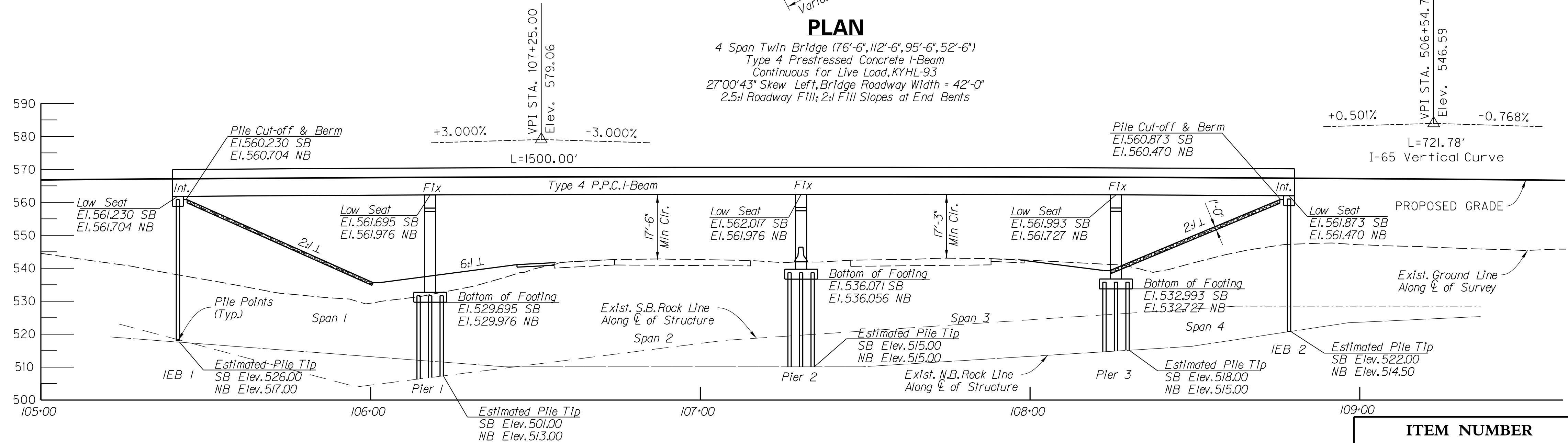
E-SHEET NAME:

MicroStation v8.11.7.180



**PLAN**

4 Span Twin Bridge (76'-6", 112'-6", 95'-6", 52'-6")  
Type 4 Prestressed Concrete I-Beam  
Continuous for Live Load, KYHL-93  
27°00'43" Skew Left, Bridge Roadway Width = 42'-0"  
2.5:1 Roadway Fill; 2:1 Fill Slopes at End Bents



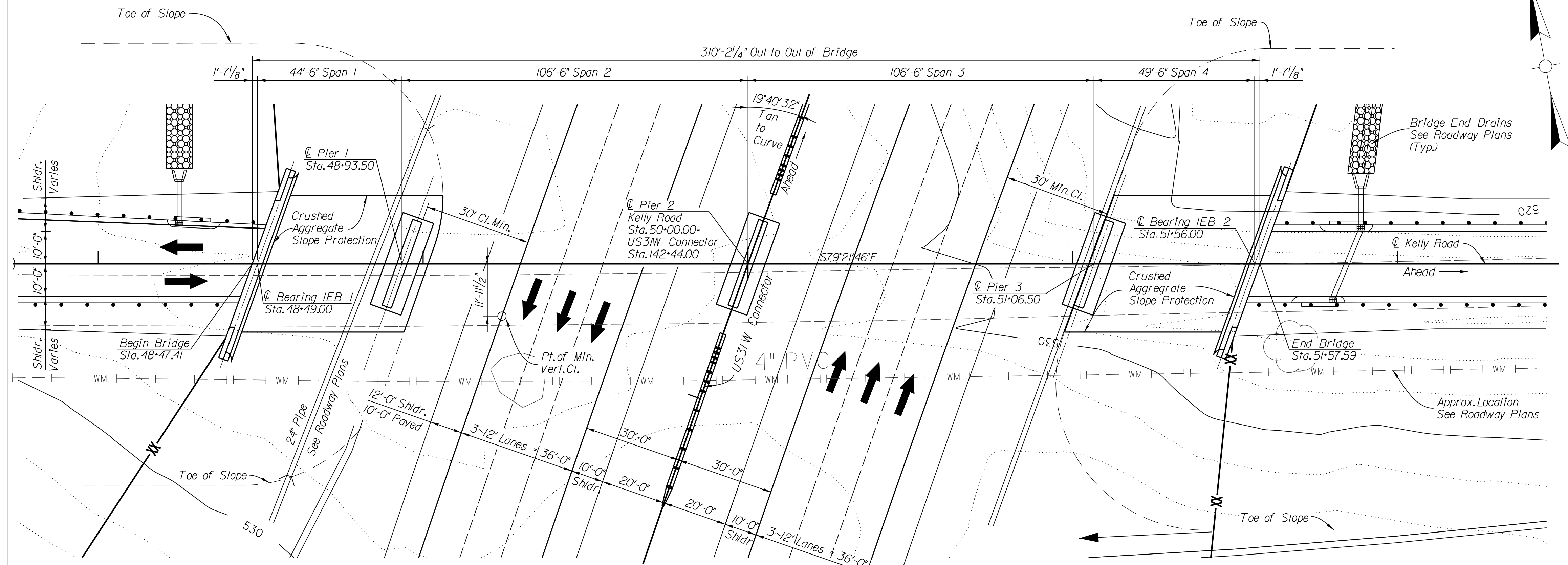
**SECTION ALONG C SURVEY**

ITEM NUMBER  
**3-16.00**

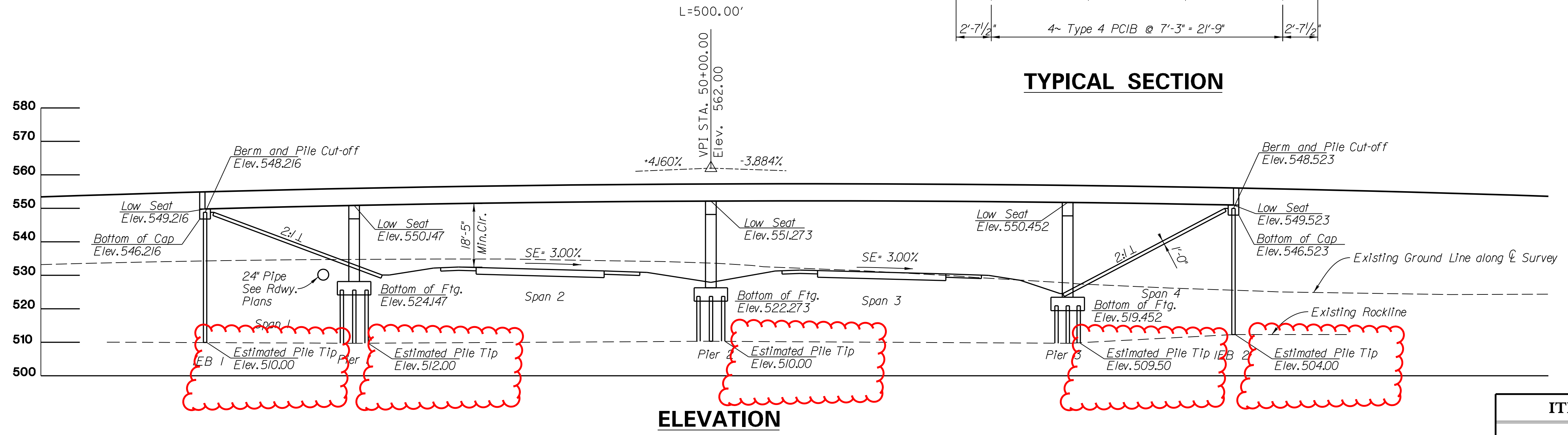
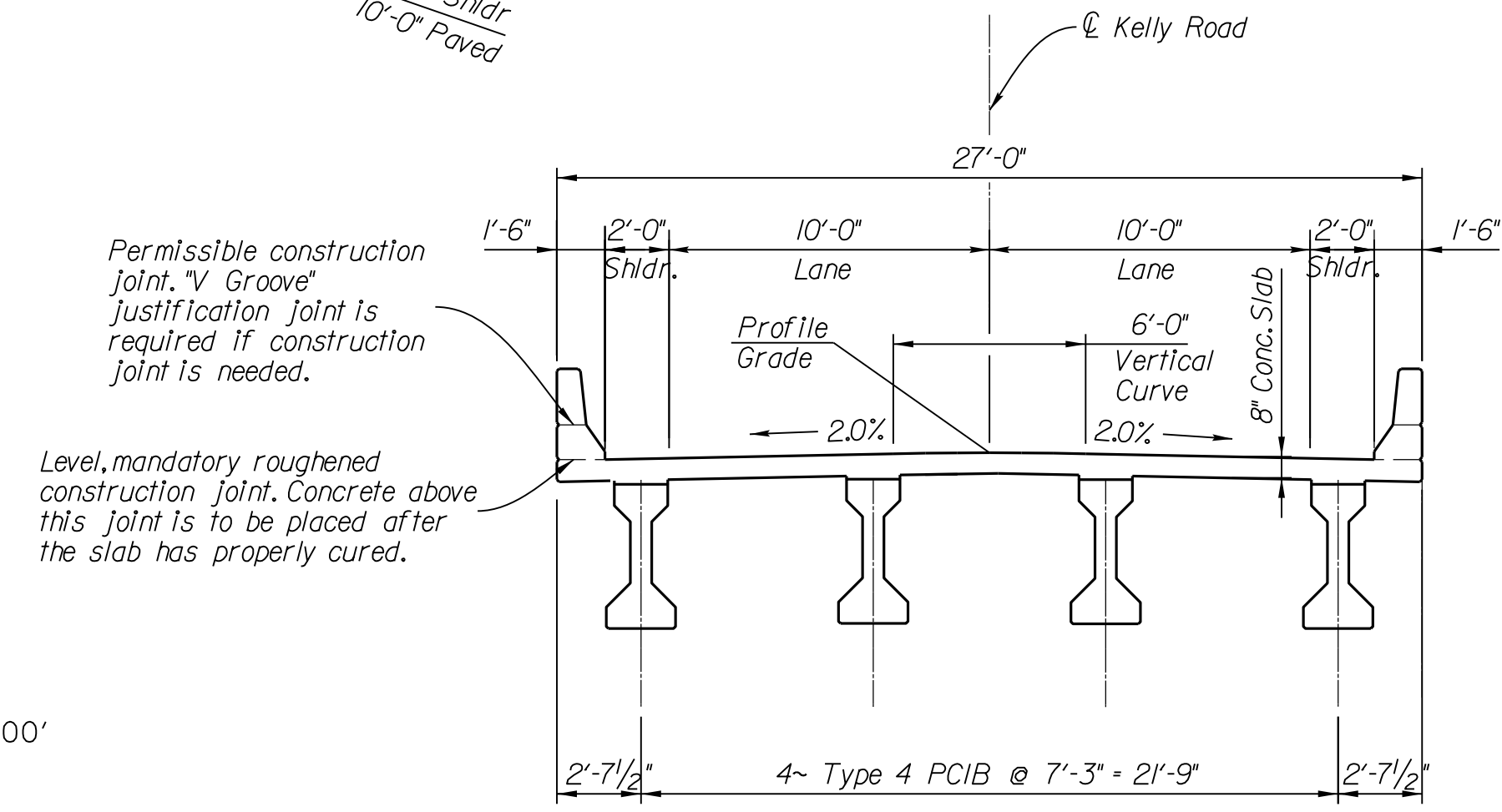
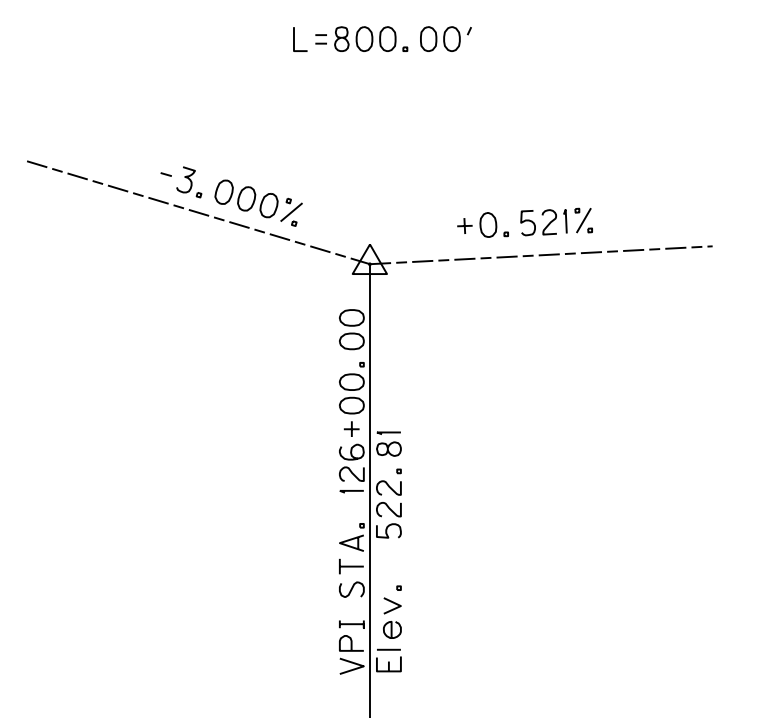
REVISION		DATE
DATE: NOV. 2011	CHECKED BY	
DESIGNED BY: S. WEBER	R. WADE	
DETAILED BY: F. KOCH	R. WADE	
<b>Commonwealth of Kentucky</b> <b>DEPARTMENT OF HIGHWAYS</b>		
COUNTY <b>WARREN</b>		
ROUTE <b>US31W CONNECTOR</b>	CROSSING <b>I-65</b>	
<b>LAYOUT SHEET</b>		
PREPARED BY <b>Qk4</b> 1046 E. Chestnut Street Louisville, Kentucky 40202		SHEET NO. <b>S3</b> DRAWING NO. <b>26721</b>



FILE NAME: V:\03102 1-65 TO 31-W CONNECTOR BRIDGES\2. KELLY ROAD OVER US31 CONNECTOR\STAGE II FINAL PLANS\DRAWINGS\3 - 53 LAYOUT.PLOT  
 USER: crenfrow  
 DATE PLOTTED: May 23, 2014  
 E-SHEET NAME:  
 MicroStation v8.11.7.180

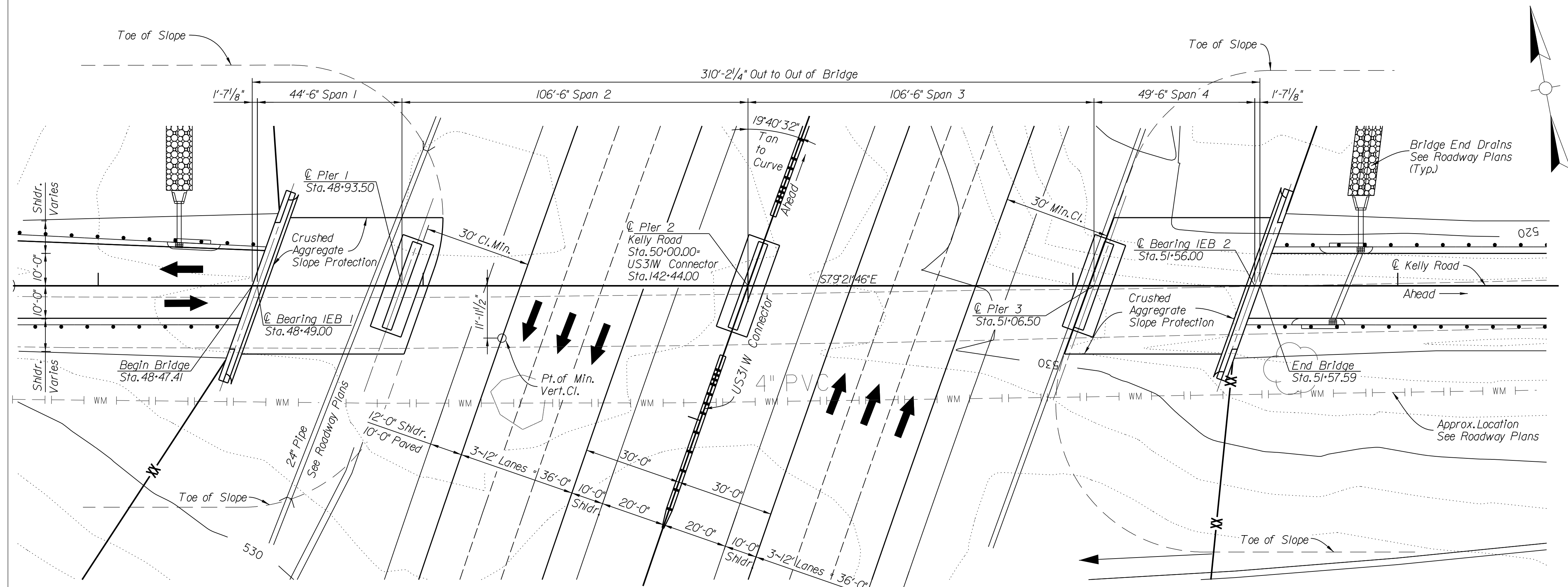


US 31 W CONNECTOR  
 PI STA 145+51.78  
 Δ = 16°17'13" RT  
 T = 1001.66'  
 L = 1989.82'  
 R = 7000.00'  
 E = 71.30'  
 e = 3.00%  
 Runoff = 135.00'  
 Runout = 90.00'



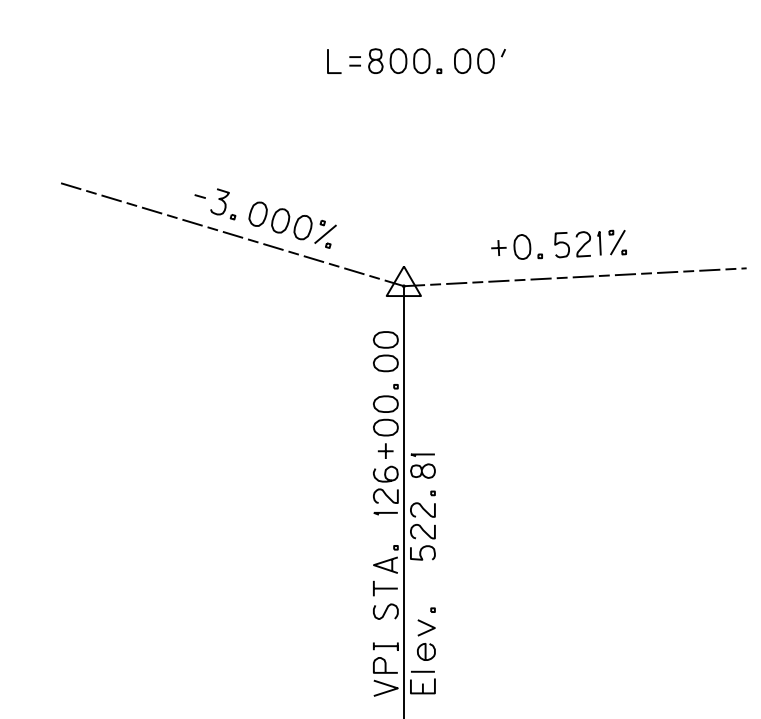
REVISION		DATE
DATE: MAY, 2013	CHECKED BY: R. Wade	
DESIGNED BY: S. Weber	DETAILED BY: S. Weber	
<b>Commonwealth of Kentucky DEPARTMENT OF HIGHWAYS</b>		
COUNTY <b>WARREN</b>		
ROUTE <b>KELLY RD</b>	CROSSING <b>US31W CONNECTOR LAYOUT</b>	
ITEM NUMBER <b>3-16.00</b>	PREPARED BY <b>Qk4</b> 1046 E. Chestnut Street Louisville, Kentucky 40202	SHEET NO. <b>S3</b> DRAWING NO. <b>27006</b>

FILE NAME: V:\03102 1-65 TO 31-W CONNECTOR BRIDGES\2. KELLY ROAD OVER US31 CONNECTOR\STAGE II FINAL PLANS\DRAWINGS\3 - 53 LAYOUT.PLOT  
 USER: crenfrow DATE PLOTTED: May 23, 2014  
 E-SHEET NAME: MicroStation v8.11.7.180

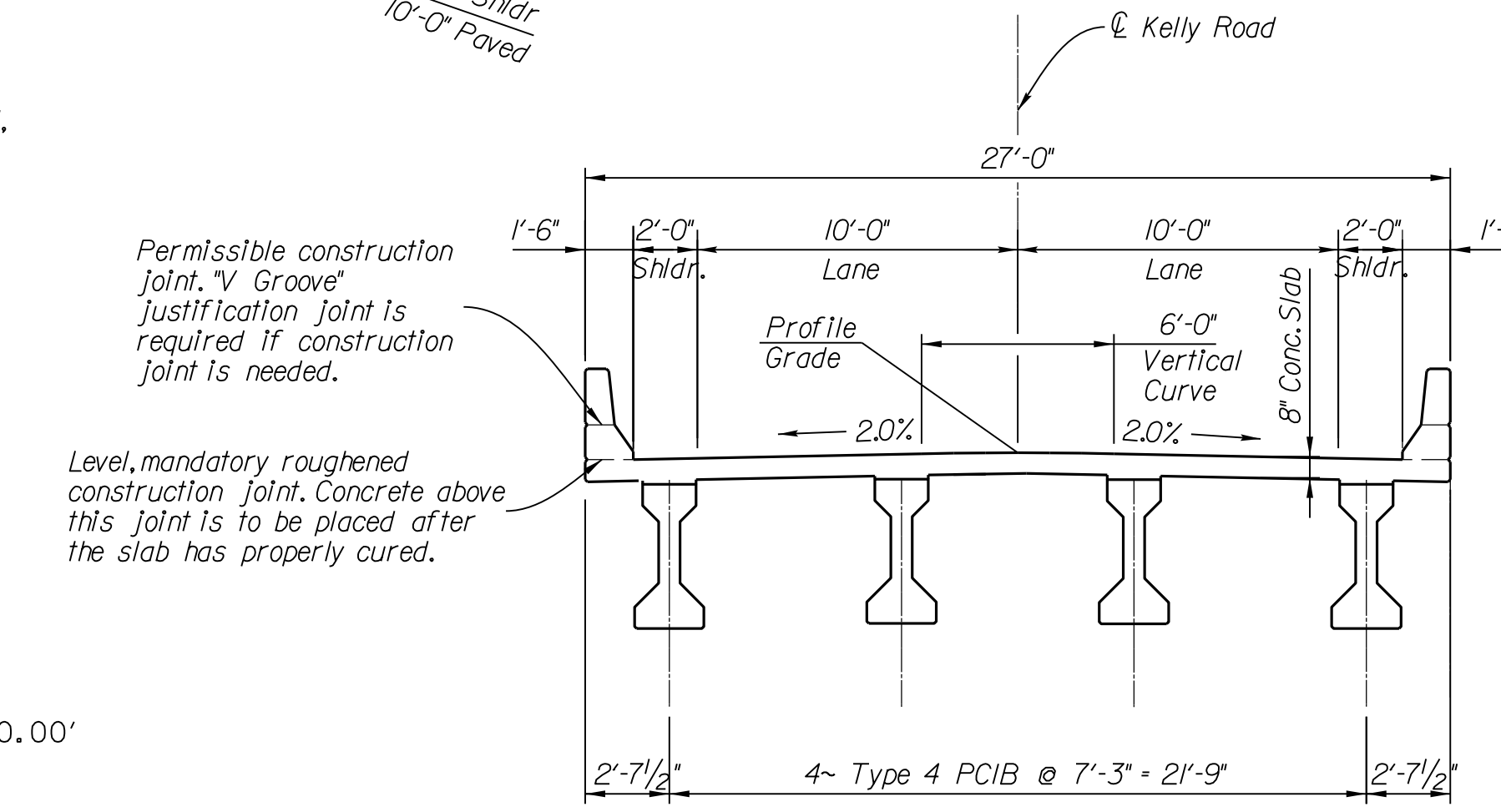


**PLAN**  
 4 Span Bridge (44'-6", 106'-6", 106'-6", 49'-6")  
 Type 4 PCIB  
 Continuous For Live Load, KYHL-93 Live Load  
 19°40'32" Skew Right, Bridge Roadway Width 24'-0",  
 2.5% Roadway Fill, 2% Fill Slope at End Bents

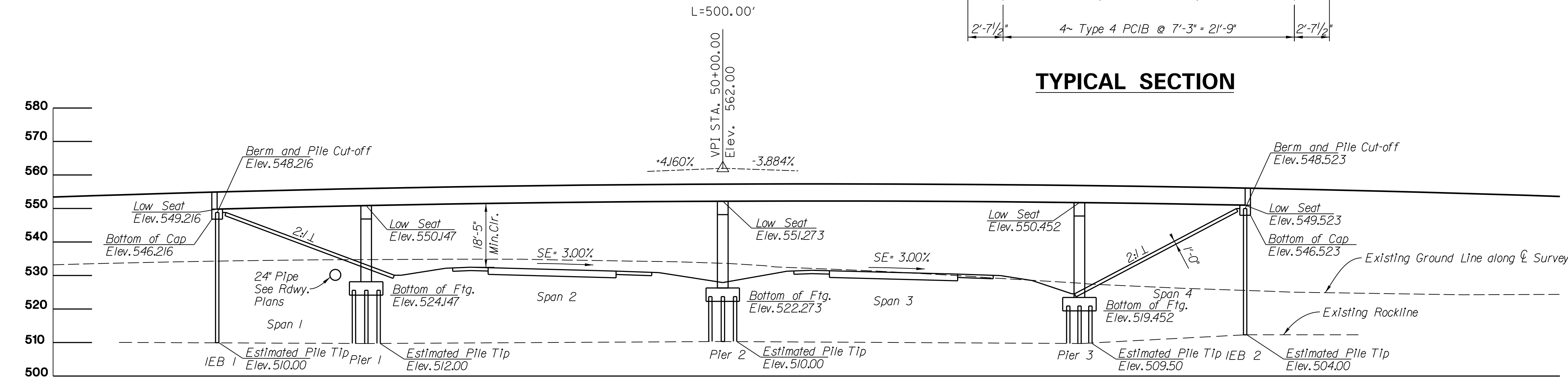
US 31 W CONNECTOR  
 PI STA 145+51.78  
 Δ = 16°17'13" RT  
 T = 1001.66'  
 L = 1989.82'  
 R = 7000.00'  
 E = 71.30'  
 e = 3.00%  
 Runoff = 135.00'  
 Runout = 90.00'



**US31W CONNECTOR  
 PROFILE GRADE**



**TYPICAL SECTION**



**ELEVATION**

ITEM NUMBER  
**3-16.00**

REVISION		DATE
DATE: MAY, 2013	CHECKED BY: R. Wade	
DESIGNED BY: S. Weber	DETAILED BY: F. Koch	
<b>Commonwealth of Kentucky DEPARTMENT OF HIGHWAYS</b>		
COUNTY <b>WARREN</b>		
ROUTE <b>KELLY RD</b>	CROSSING <b>US31W CONNECTOR LAYOUT</b>	
PREPARED BY <b>Qk4</b> 1046 E. Chestnut Street Louisville, Kentucky 40202		SHEET NO. <b>S3</b> DRAWING NO. <b>27006</b>



**CURVE DATA**

MAINLINE  
 PI STA. 185+76.90  
 $\Delta = 32^{\circ}24'12''$  LT  
 $T_s = 1001.66'$   
 $L_s = 300.00'$   
 $L_c = 3393.26'$   
 $\theta_s = 1^{\circ}25'57''$  LT.  
 $LT = 200.01'$   
 $ST = 100.01'$   
 $R = 6000.00'$   
 $E = 248.14'$   
 $e = 3.00\%$   
 Runoff = 300.00'  
 Runout = 171.00'

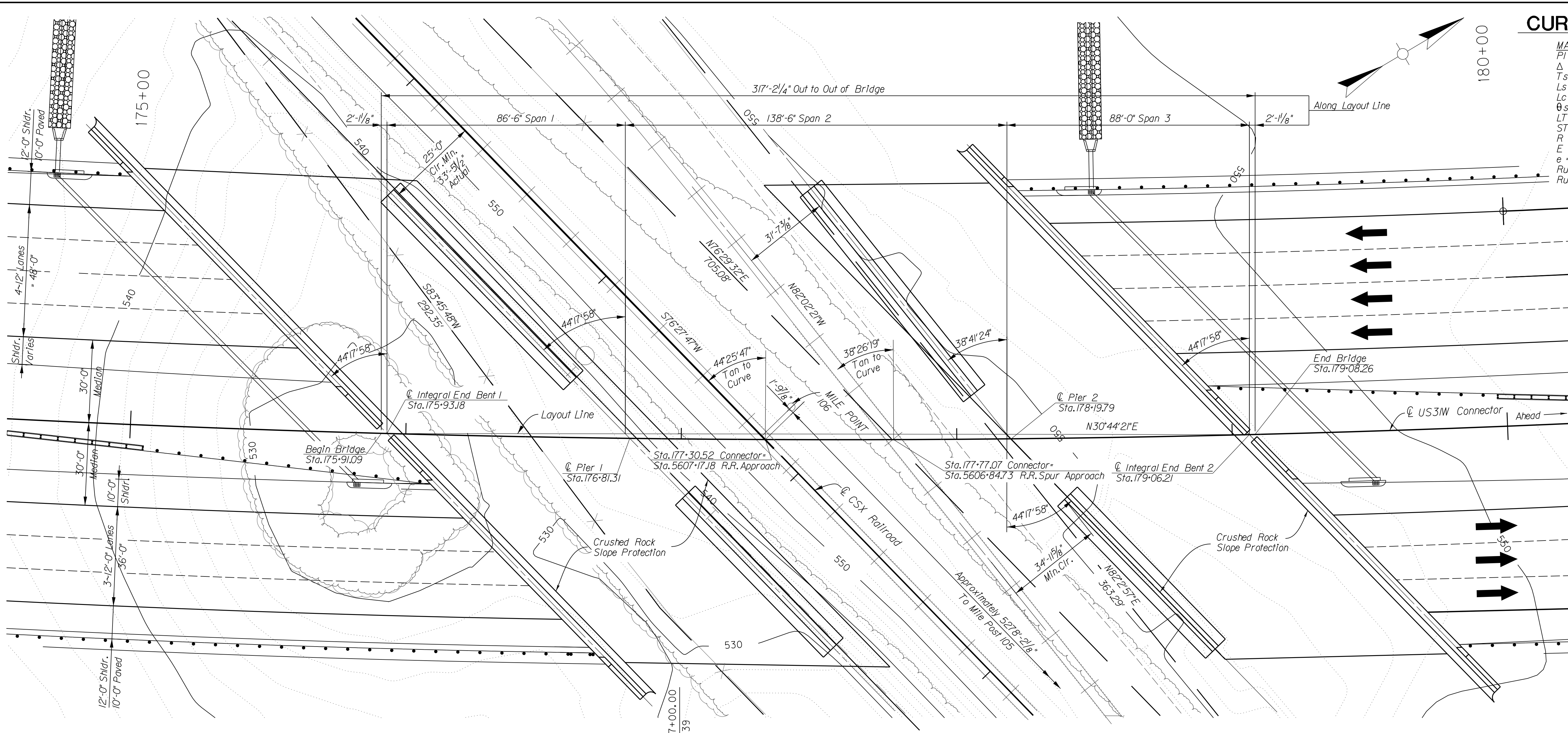
SHEET LOCATION:

FILE NAME: \\designs\files\specifications\

USER NAME: \\user\

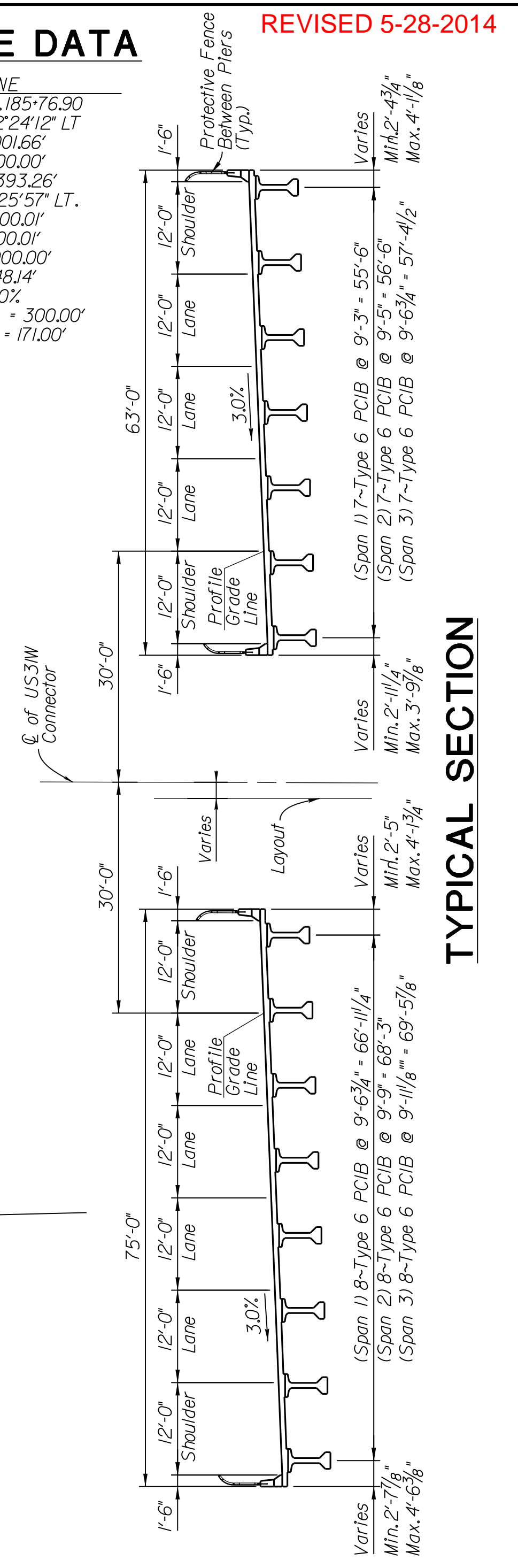
DATE:

E-SHEET NAME:

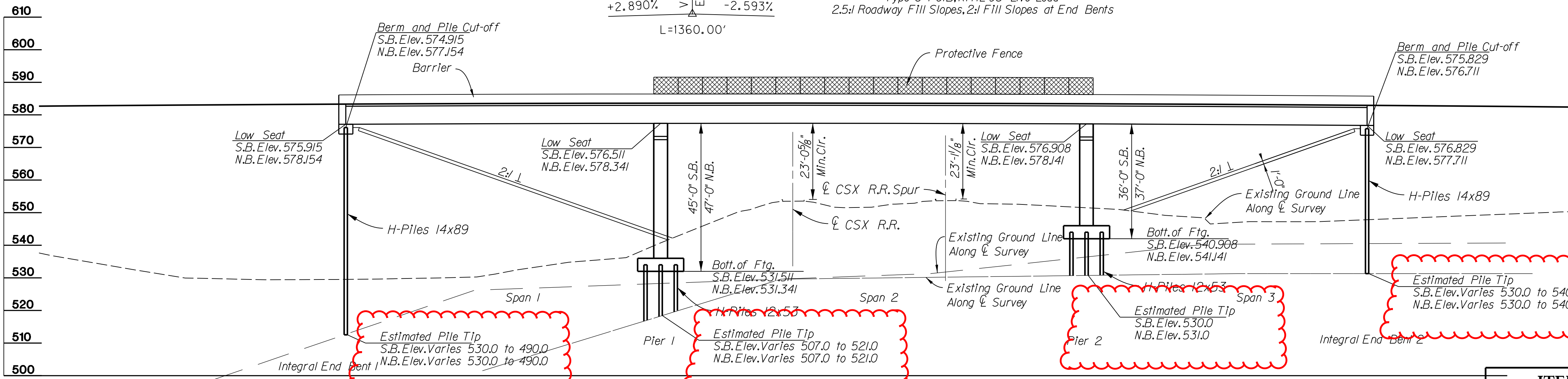


**PLAN**

(Deck Removed)  
 Three Span Twin Bridges (86'-6", 138'-6", 88'-0")  
 Type 6 PCIB, KYHL-93 Live Load  
 2.5:1 Roadway Fill Slopes, 2:1 Fill Slopes at End Bents



**TYPICAL SECTION**



**ELEVATION**

REVISION		DATE
DATE:	07/12/2013	CHECKED BY:
DESIGNED BY:	S. Weber	R. Wade
DETAILED BY:	F. Koch	R. Wade
<b>Commonwealth of Kentucky</b> <b>DEPARTMENT OF HIGHWAYS</b>		
COUNTY <b>WARREN</b>		
ROUTE <b>US31W CONNECTOR</b>	CROSSING <b>CSX RAILROAD</b>	
<b>LAYOUT</b>		
PREPARED BY <b>Qk4</b> 1046 E. Chestnut Street Louisville, Kentucky 40202		SHEET NO. <b>S3</b> DRAWING NO. <b>27007</b>

ITEM NUMBER  
**3-16.00**



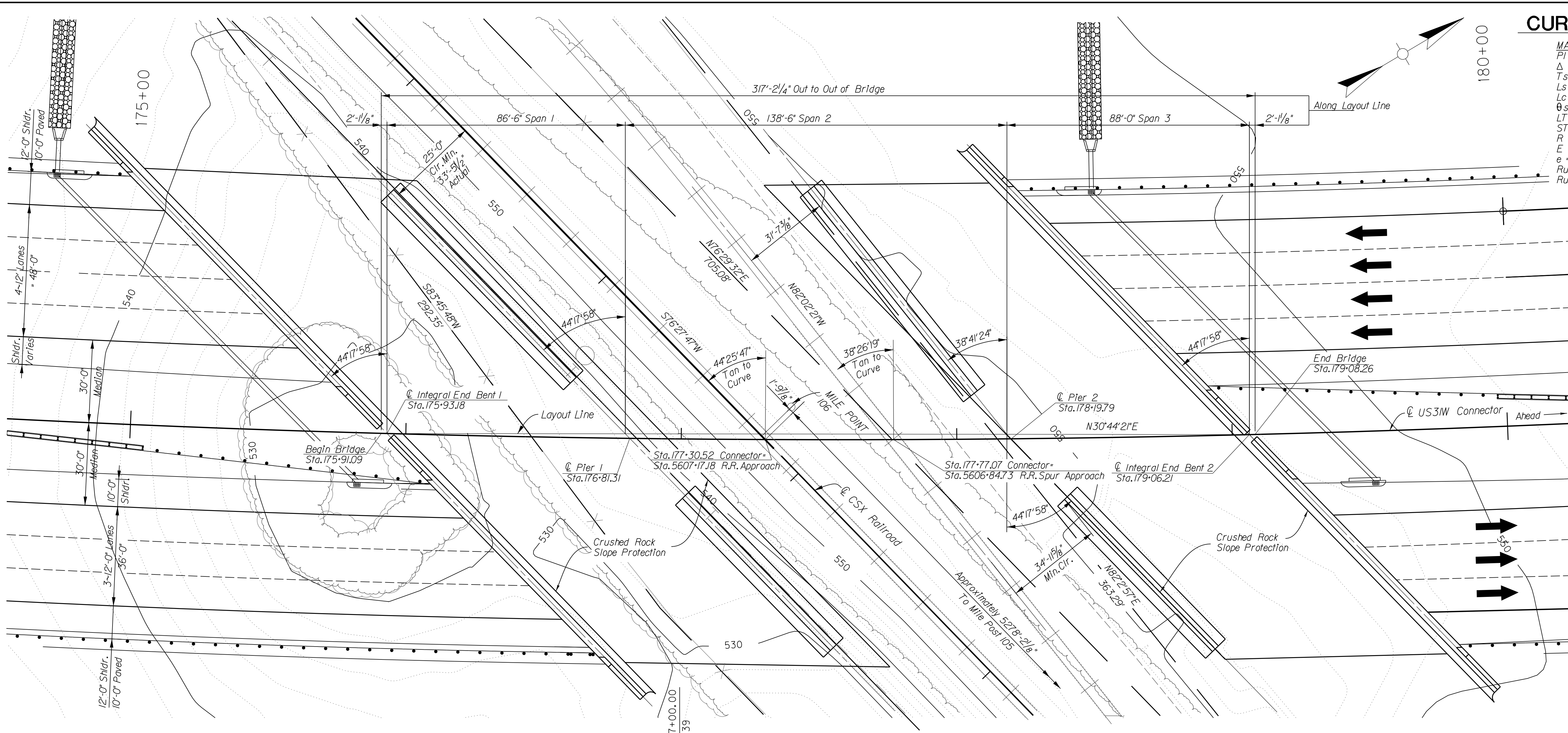
SHEET LOCATION:

FILE NAME: \$\$\$\$\$designs\$files\$specifications\$\$\$\$

USER NAME: \$\$\$\$\$USER\$\$\$\$

DATE: \$\$\$\$\$DATE\$\$\$\$

E-SHEET NAME:

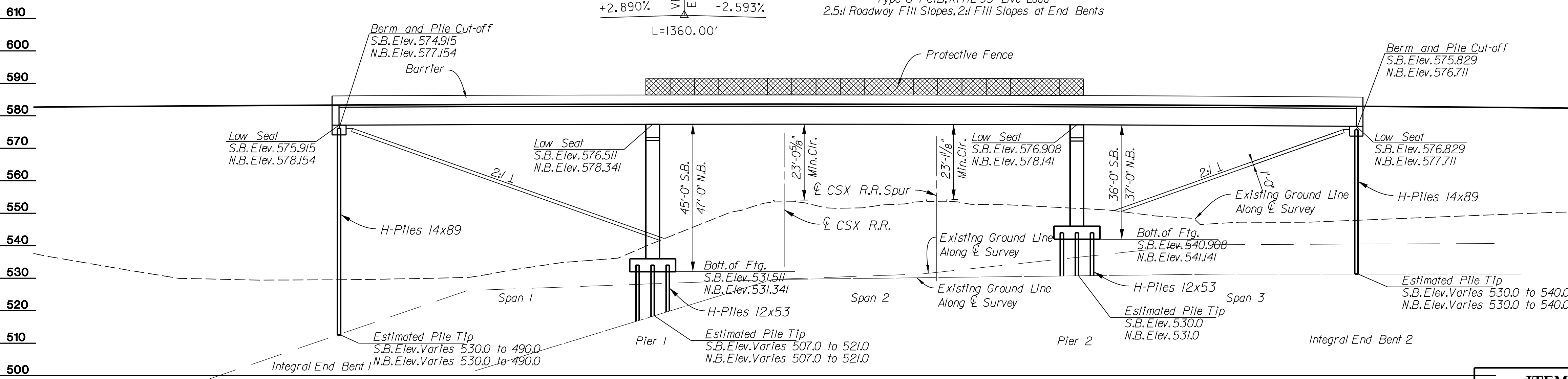
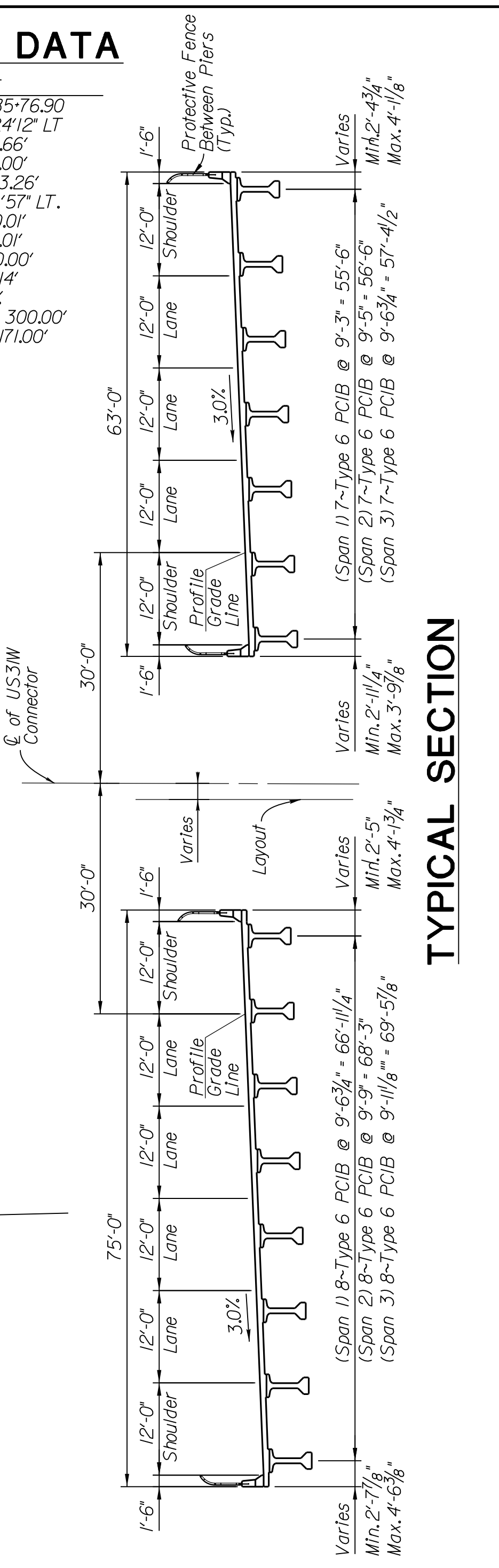


### PLAN

(Deck Removed)  
 Three Span Twin Bridges (86'-6", 138'-6", 88'-0")  
 Type 6 PCIB, KYHL-93 Live Load  
 2.5:1 Roadway Fill Slopes, 2:1 Fill Slopes at End Bents

### CURVE DATA

MAINLINE  
 PI STA. 185+76.90  
 $\Delta = 32^{\circ}24'12''$  LT  
 $T_s = 1001.66'$   
 $L_s = 300.00'$   
 $L_c = 3393.26'$   
 $\theta_s = 1^{\circ}25'57''$  LT.  
 $LT = 200.01'$   
 $ST = 100.01'$   
 $R = 6000.00'$   
 $E = 248.14'$   
 $e = 3.00\%$   
 $Runoff = 300.00'$   
 $Runoff = 171.00'$



### ELEVATION

REVISION	DATE

DATE: 07/12/2013 CHECKED BY: R. Wade  
 DESIGNED BY: S. Weber  
 DETAILED BY: F. Koch

**Commonwealth of Kentucky**  
**DEPARTMENT OF HIGHWAYS**

COUNTY  
**WARREN**

ROUTE **US31W CONNECTOR** CROSSING **CSX RAILROAD**

**LAYOUT**

PREPARED BY  
**Qk4**  
 1046 E. Chestnut Street  
 Louisville, Kentucky 40202

SHEET NO.  
**33**  
 DRAWING NO.  
**27007**

ITEM NUMBER
3-16.00

### *Special Environmental Note*

- A. If, during the implementation of the Project, a previously unidentified historic resource is discovered or a previously identified resource is affected in an unanticipated manner, the contractor shall ensure that all work within a minimum of 150 feet around the area of the discovery shall cease until such time as a Treatment Plan can be developed by KYTC, and implemented.
  
- B. Due to the karst nature of the environment on this project, caves and voids may be encountered during construction. If a void is opened, it must be examined by a professional archaeologist to determine if it contains artifacts or human remains. The Contractor shall be responsible for notifying KYTC when any such features are encountered and ceasing work in that area until such time that KYTC has completed its assessment.
  
- C. When a historic or archaeological site is discovered during construction KYTC shall require the contractor to take all reasonable measures to clearly mark and avoid harm to the property until the Federal Highway Administration (FHWA) concludes consultation with the State Historic Preservation Office, Indian Tribes, and other parties deemed appropriate by FHWA.